

Access to HPC Cluster

March, 2018

1. Access to Provided Laptops

As an **RWTH member** (except UKA), you need a so-called “PC-Pool Account” in order to get access to the provided laptops. You should have already created it on your own on <http://www.rwth-aachen.de/selfservice> using your Identity Management (IdM) ID. If so, please refer to section *1.1 PC-Pool Account*.

If you have not yet created a PC-Pool Account, please see section *1.2 Local Account* on how to get local access to the laptop and the network. Then create your own PC-Pool account following the link above. Afterwards logout and follow the instructions in section *1.1 PC-Pool Account*.

If you are **not a member of the RWTH** or if you belong to the **UKA**, refer to section *1.2 Local Account*.

1.1. PC-Pool Account

1. Before you login, make sure that the “PC-POOL” domain is used. It is given below the text fields for user name and password.
2. Use your IdM ID as user name.
3. Use the password that you have specified for the service “PC-Pool” in Selfservice. It might not be the same as your cluster account password!

1.2. Local Account

Only for external users and UKA members:

1. Login locally on the laptop. Note that the domain on the local LabTop computers has to be “PC-POOL”. Click on “How do I log on to another domain?” and see the instructions including the computer name.
Use as user name: **.\hpcIab**
The password is: **hPClab**
2. Your data files will be stored permanently on the computer. Hence, if you use exactly the same laptop every time/day, your data will be available. However, please don't waste system storage and remove all your stored files on the last day of your attendance!

Warning!

All data of local accounts are accessible by all users since user name and password are not secret. Thus, don't save any confidential data on the laptops.

Access to HPC Cluster

March, 2018

2. Access to Linux HPC Cluster

Please use one of the provided **hpclabNN** accounts for the lab sessions. These have local licenses installed and are added to Advanced Reservation for GPU nodes (Part III: OpenACC, Friday, March 16). **Warning! All data of these accounts are accessible by all users since the password is not secret. Don't save any confidential data here.**

As an **RWTH member** (including UKA), you also can use your "Hochleistungsrechnen RWTH Aachen" account in order to get access to the RWTH Compute Cluster. If you don't have one, you can create it on your own on <https://www.rwth-aachen.de/selfservice> using your IdM account. Ask us for access for GPU nodes (Part III: OpenACC, Friday, March 16).

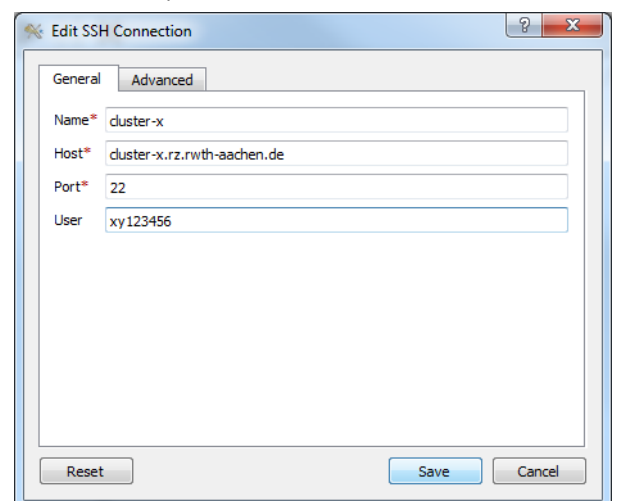
In what follows, we describe how to access the cluster from the provided laptops. If you use your own laptop, please see <https://doc.itc.rwth-aachen.de/display/CC/Access> for more information.

FastX

1. Open "FastX 2" from the start menu. If Windows Firewall asks for new rules or Fast-X offers an update, click "Cancel".
2. When you start FastX for the first time, you will have to activate your license. For this purpose chose "License Server" as the activation method and enter the following information:
 - a. Hostname: license2.rz.rwth-aachen.de
 - b. Port: 50092
3. Define a connection
 - a. Click on the '+' symbol (top right), choose 'ssh'. A new window shows up that allows you to configure a new connection. Complete the following fields and press 'Save'. Depending on your ssh configuration a new window may show up asking for your password and/or permission to accept the host.
 - i. Name: an arbitrary string that identifies the connection, e.g. 'myconnection'
 - ii. Host: Either **cluster-x**.rz.rwth-aachen.de or **cluster-x2**.rz.rwth-aachen.de
 - iii. User: **hpclabNN** or Your TIM user ID
4. Start a new session
 - a. left-click on '+' (top right) in the new connection window opens the connection. Currently, the desktop environments **MATE** and **XFCE** can be started. Choose one with EN or DE keyboard layout and press OK.
5. When everything worked as expected, the remote desktop window will show up.

Vendor documentation:

<http://www.starnet.com/xwin32kb/fastx-desktop-client/>



FastX Browser based client

To use the browser based client follow one of the links

<http://cluster-x.rz.rwth-aachen.de:3000/>

<http://cluster-x2.rz.rwth-aachen.de:3000/>

You will then get redirected to a SSL-secured connection on port 3443 where you can login with your HPC account.

Refer to <https://doc.itc.rwth-aachen.de/display/CC/Remote+desktop+sessions>