



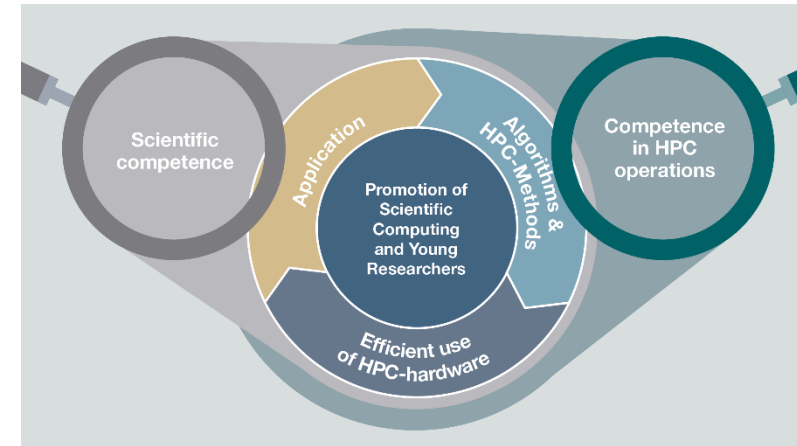
Application for computing time NHR4CES / HPC.NRW

How can I get access to supercomputers?

Tim Cramer

National High Performance Computing Center for Computational Engineering Sciences

- Part of the association for National High Performance Computing (NHR)
- Aims to provide scientists at German universities with
 - the computing capacity they need for their research
 - skills for the efficient use of this resource
- NHR4CES collaborate in topic-specific Simulation and Data Laboratories and Cross-Sectional Groups
- Common computing time application processes

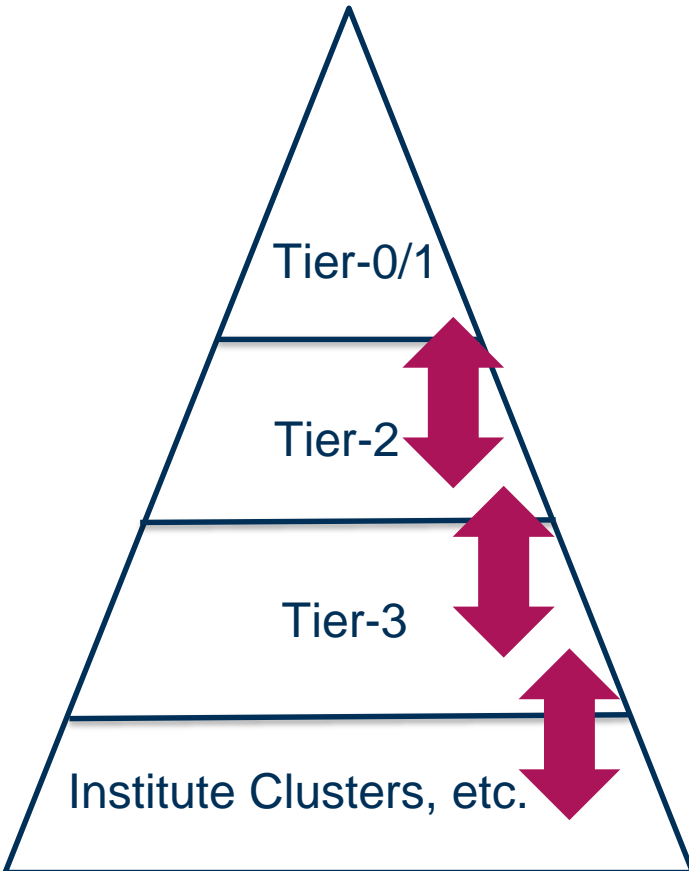


IT Center at RWTH Aachen (picture: © Quadflieg)



University Computing Center at TU Darmstadt

- HPC resources are expensive
 - Up to 15 Mio € per Tier-2 system (expected life time: ~5 years)
 - Local staff for administration, maintenance, support, review processes, procurements, etc.
 - ~ 1 Mio € power consumption per year / system (depending on system size)
- Funding agencies (DFG, NRW, Bund, etc.)
 - Usage only for scientific purpose (e.g. crypto mining strictly forbidden)
 - HPC operators have to ensure scientific usage
 - Compute time application & review
 - Project monitoring
 - Project reports



Tier 0: European Level

- Partnership for Advanced Computing in Europe (PRACE)
- <https://prace-ri.eu/hpc-access/calls-for-proposals>

Tier 1: National Level (large scale)

- Gauss Centre for Supercomputing (GCS)
- Jülich (JSC), Munich (LRZ), Stuttgart (HLRS)
- <https://www.gauss-centre.eu/for-users/hpc-access>

Tier 2: Regional-National Level

- Gauss Allianz (GA): <https://gauss-allianz.de>
- Aachen, Cologne, Paderborn (and others outside NRW)
- Nationales Hochleistungsrechnen (NHR): <https://www.nhr-gs.de>

Tier 3: Regional Level

- E.g. local universities

Who can use the computing resources at RWTH Aachen University?

- Authorized users without computing project application
 - Members of RWTH Aachen University
 - Members of the UKA for research and teaching (FB10)
 - Persons with partner status of RWTH Aachen University
- Authorized users through JARDS computing project application
 - Members of German public or government-approved teaching and research institutions
- Projects require a Principle Investigator (PI)
 - Leading researcher (usually with doctorate)
- Citizens of countries that are subject to the export control policy of the German Federal Government may need additional authorization from the German Federal Office for Economic Affairs and Export Control (BAFA) before they are allowed to use HPC resources

How to apply for computing resources?



Most effort for you here, we will take care about the other steps

Really? So complicated? I just want to do research!

→ Don't be afraid! It is not that bad ;-)



- Effort for proposal depends on amount of required resources
- Resource estimation (allocation in Mio-Core-h)
 - Core-h := Usage / reservation of one core for one hour
 - Example Core-h: Using one compute node with 48 cores for one year (24/7):
 $48 \text{ cores} * 24 \text{ h} * 365 \text{ days} = 0.42 \text{ Mio Core-h}$
 - Example Memory: Many HPC systems are equipped with 2-4 GB per core.
- Trial accounts / test projects possible (“PREP”)

Project Preparation 2/3



– Identify a fitting project category

New category	Old category	Mio. Core-h per year / project	Calls	Scientific Review	Tier	CLX18-T2 Contingent [Mio. Core-h]	CLX16-T2 Contingent [Mio. Core-h]
RWTH Thesis	RWTH Thesis	< 0.048	Rolling	No	Tier-3	-	-
RWTH Lecture	RWTH Lecture	< 0.048	Rolling	No	Tier-3	-	-
RWTH small	RWTH small	< 0.24	Rolling	No	Tier-3	-	-
NHR Prep	PREP	Test projects only	Rolling	No	Tier-2	20	0
NHR Normal	JARA / RWTH medium / BUND	1 – 8	4x p.a. / rolling conditional approval as soon as scientific reviews are available	Yes	Tier-2	100	0
NHR Large	JARA / BUND	8 - 35	4x p.a.	Yes	Tier-2	200	0
JARA	JARA	2.4 - 8	2x p.a.	Yes	Tier-2	80	120



- For larger projects you need to provide scaling information
 - **Tutorial:** https://hpc-wiki.info/hpc/Scaling_tutorial
- Prepare a project description (templates can typically be found on the local websites)
 - **Most important part, will be scientific reviewed**
- NHR categories
 - **Only** the Resource Allocation Board (RAB) decides about computing resources

Submission Deadline	TecRev Deadline	SciRev Deadline	RAB Meeting	Project Start
01.09.21	15.09.21	20.10.21	Mid Nov 2021	01.12.21
01.11.21	15.11.21	20.12.21	Mid Jan 2022	01.02.22
01.02.22	15.02.22	20.03.22	Mid Apr 2022	01.05.22
01.05.22	15.05.22	20.06.22	Mid Jul 2022	01.08.22

→ Even for NHR normal: Formal resource allocation only after the meeting of the RAB



1. Use the local submission system
 - **RWTH categories** <https://www.itc.rwth-aachen.de/hpc-project>
 - **NHR4CES:** <https://www.nhr4ces.de/index.php/applying-for-computing-time>
2. An external Principal Investigator (PI) has to sign the application
3. Send signed and scanned proposal

Formal Evaluation & Technical Review



Formal Evaluation

- Formal aspects of a project are verified by the HPC center (e.g., Is the PI a professor or owns an Ph.D?)
- PI (or contact person) will be contacted if questions/problems show up
- Duration: usually some work days

Technical Review

- HPC experts will check your proposal for technical feasibility (e.g., availability of requested resources, software, etc.)
- Duration: up to two week



- Not done for test (or smaller) projects
- We select 1-3 reviewer (=experts in the corresponding scientific domain)
- Depending on project size: Internal (=RWTH) or external experts
- Single-blind review
- Reviewers check the scientific soundness
- Duration:
 - Rolling calls: usually 4-6 weeks
 - Fixed date calls: up to 10 weeks (depending on deadlines)
- Note: If your project proposal is successful, you might be requested as review for other projects in future (also from other NHR centers!)

Resource Allocation and Monitoring 1/3

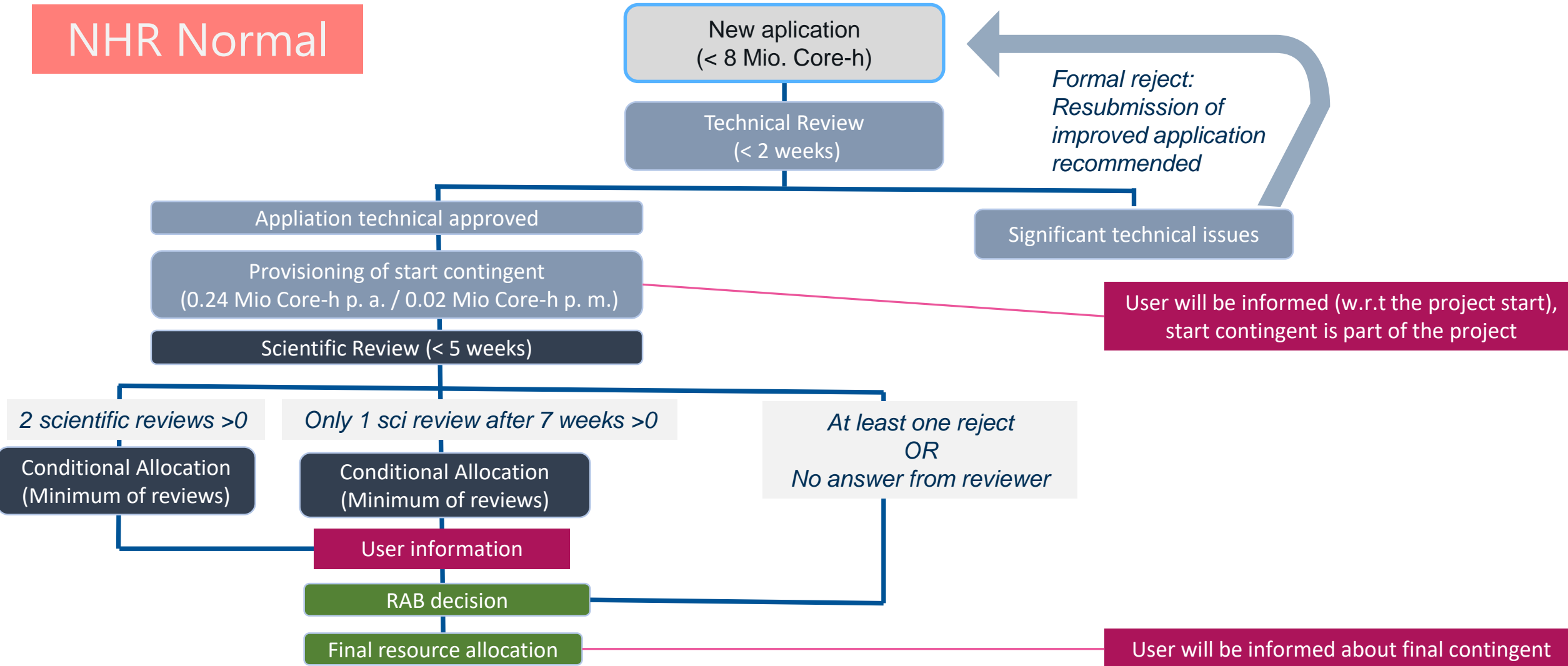


- The Resource Allocation Board (RAB, “Vergabegremium”) decides about the resources for the project
- In case of success:
 - generate an account (if not done already)
 - add members to the approved compute project
 - prepare and submit job scripts for the project
 - obtain the project account information (quota, usage, etc.)
- Typical time for a project: One year
 - Uniform resource consumption on monthly-base expected
 - You might borrow Core-h from next month or use from last month

Resource Allocation and Monitoring 2/3



NHR Normal



Resource Allocation and Monitoring 3/3



- Technically every project on the cluster has a certain budget
- Example Aachen (command line tool):
 - Sliding Window (3 months)
 - 1000 (remainder from previous month)
 - + 50000 (for the current month)
 - + 50000 (for next month)
 - 59000 (consumed this month)
 - = 40000 Core-h left over to be consumed this month at most!

OR:

Core-h left over for this month*:
 $50000 * -20\% = -10000$

```
$ r_wlm_usage -p bund1234 -q
Account:                                bund1234
Type:                                    bund
Start of Accounting Period:              01.11.2020
End of Accounting Period:                31.10.2021
State of project:                          active
-----
Quota monthly (core-h):                  50000
Remaining core-h of prev. month:         -1000
Consumed core-h current month:           59000
Consumed core-h last 4 weeks:            65000
Consumable core-h (%):                    -20
Consumable core-h:                        40000
-----
Total quota (core-h):                     0.600 Mio
Total consumed core-h so far:             0.500 Mio
-----
Default partition:                        c18m
Allowed partitions:                        c18m,c18g
Max. allowed wallclocktime:               24.0 hours
Max. allowed cores per job:                384
```

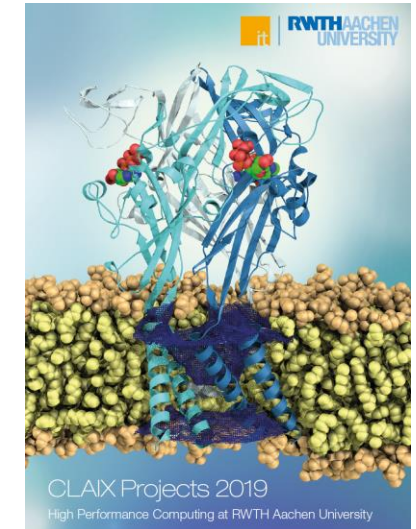
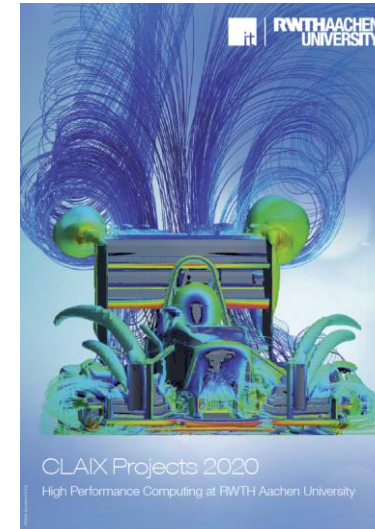
* 200%: No core-hours were used during the previous and the current month
-101%: The usage for the current and the previous month is > three months' quota

Project Reports



- After the project you have to provide a report about the scientific results
- Acknowledgments in related publications required

→ Both helps the HPC centers to argue for new future HPC resources





Questions?